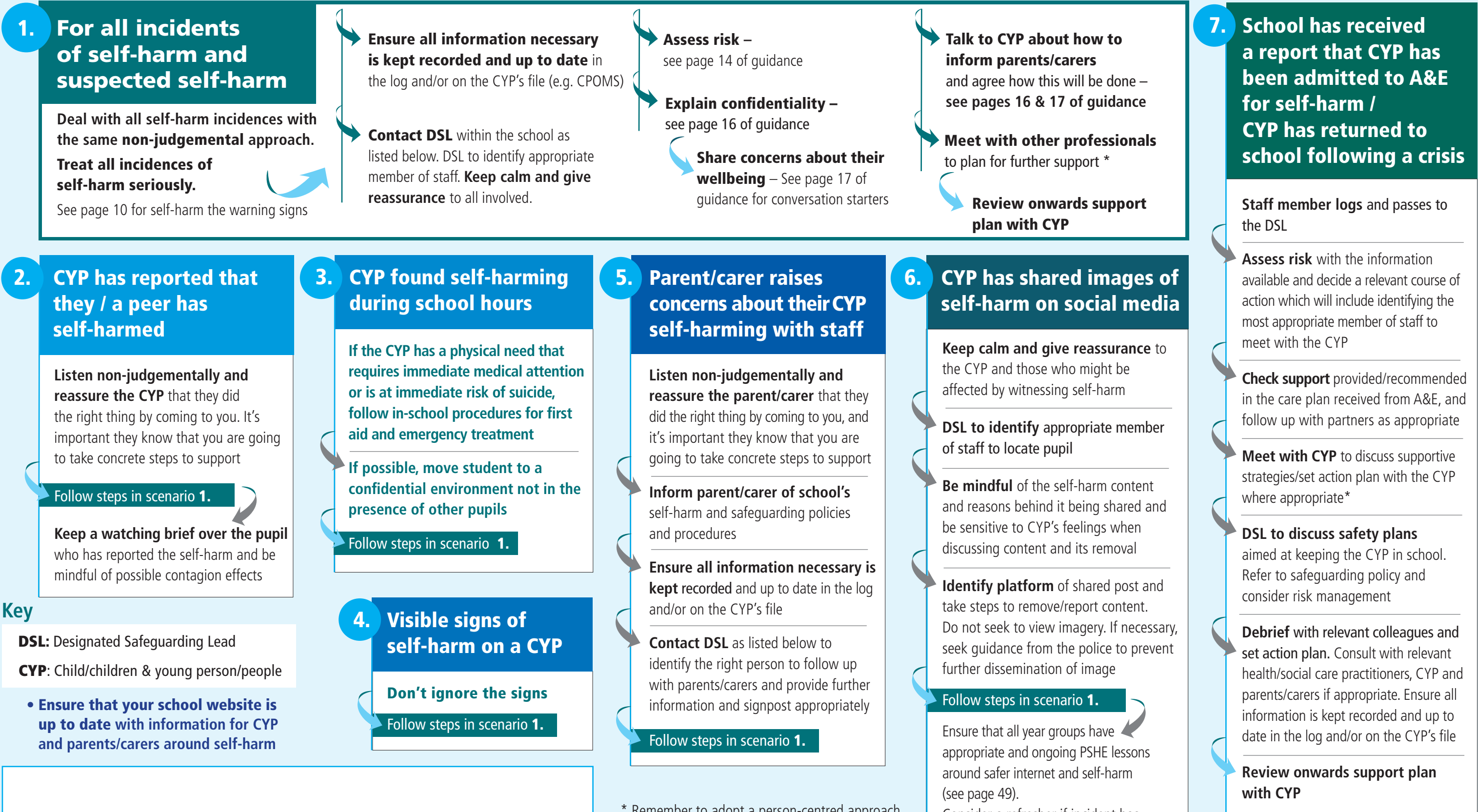


# Supporting Children and Young People who Self-Harm – a flowchart for schools

- If the CYP has a physical need that requires immediate medical attention or is at risk of suicide, follow in-school procedures for first aid and emergency treatment
- Are you in a confidential environment (not in the presence of other pupils)?



**Key**

**DSL:** Designated Safeguarding Lead

**CYP:** Child/children & young person/people

- Ensure that your school website is up to date with information for CYP and parents/carers around self-harm

Names and photos of key members of staff (e.g. Designated Safeguarding Team, First Aiders)

