

# Junk Modelling Binoculars Challenge

## Make your own binoculars

wildlife  
watch



### You will need

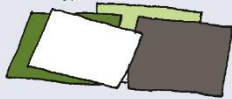
- Two cardboard tubes (you can use toilet roll tubes)



- String



- Paper



- Scissors



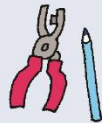
- Glue



- Rubber band



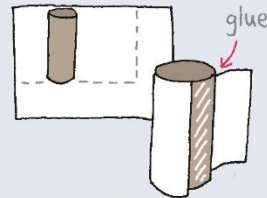
- Hole puncher or pen



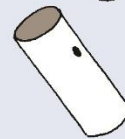
- Felt tip pens (optional)



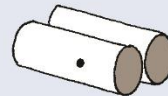
- 1 Cut your paper to size, then cover your tubes with glue and wrap the paper around them.



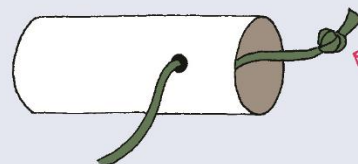
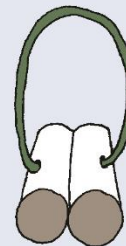
- 2 Using a pen or hole puncher, insert a hole at the side of each tube, about a third of the way down.



- 3 Glue the two tubes together so that the holes are facing the outside.

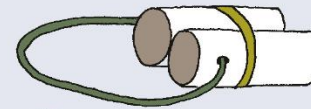


- 4 Insert string into one of the holes from the outside of the tube. Bring it through the tube and tie a chunky knot. Gently pull the string back from the outside. Repeat on the other side.

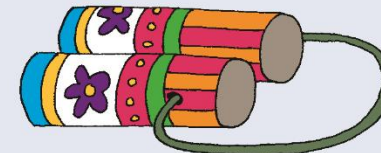


The knot will stop the string coming back through the hole.

- 5 Place a rubber band around the tubes to help the glue set. Leave to dry over night.



- 6 Remove the elastic band and then decorate them with pens!



- 7 Go wildlife detecting!

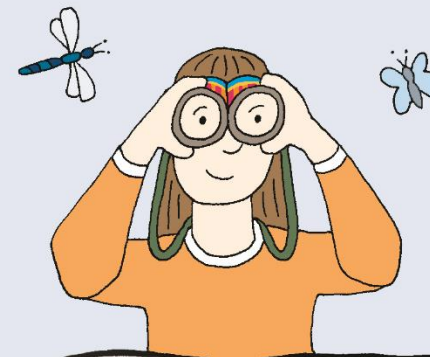


Illustration: Corinne Welch © Copyright Royal Society of Wildlife Trusts 2016